



CO-OP CONNECTIONS

THE ONE CARD THAT DOES IT ALL

YOU BENEFIT FROM CO-OP CONNECTIONS!

TCEC is proud to be an integral part of the communities we serve. That's why we offer the Co-op Connections Card, a member benefit that provides discounts on products and services from participating local and national businesses.

WHAT DOES CO-OP CONNECTIONS COST ME?

Each member of our co-op receives the card for free. There's no sign-up. No annual fees. You get your Co-op Connections Card simply because you're a member of TCEC.

VALUABLE DISCOUNTS

You can easily recognize where the Co-op Connections Card is accepted by decals in local retailers' windows. In addition to local businesses, we have secured discounts from a variety of national businesses and chains, such as rental car companies and hotels. Your card also entitles you to substantial prescription discounts nationwide!*

OTHER WAYS TO SAVE INCLUDE:

Cash Back Mall - an online shopping tool that puts money back in your wallet just for shopping at any of 3,000 websites including Travelocity, Walmart, Bass Pro, Best Buy and Target.

BonusDrive Advantage - pays you \$500 on top of all other discounts, when you buy or lease a new Jeep, Ram, Dodge and other select models.

Pet Assure - saves you money on prescriptions, visits to the vet, dogwalking and other services.

Coupons.com - printable coupons for groceries that are updated daily. Visit our link on www.connections.coop.

SEARCH USING SMARTPHONES OR TABLETS

The Co-op Connections Program allows members to find discounts while on the go. Use this app to find discounts right at home or anywhere you travel.

Search "**Co-op Connections**" in the **App store** or **Google Play** to download your free smart phone app!

I LOST MY CARD. HOW CAN I GET A NEW ONE?

You can go to our website at tcec.coop/ccs and print one after logging in to the Co-op Connections site. The Co-op Connections mobile app also has a digital card built in. You can call and request a plastic one be mailed or you can visit the TCEC office in Hooker to pick one up.

AS A BUSINESS HOW DO I JOIN?

As a business member of TCEC, it's free to join the program. This program gives you the opportunity to offer our cooperative members valuable discounts, and the only cost to you is the incentive you create to entice our members to patronize your business. In exchange, we promote your business and discount offers to our members at no cost to you. Enrolling is simple. Visit www.tcec.coop/ccs and complete the new business form. We will follow up with you to complete the process.

HOW ARE THE HEALTHY SAVINGS DISCOUNTS DIFFERENT FROM TRADITIONAL INSURANCE?

This plan is not insurance; it is a benefit discount offer. The card provides immediate discounts at the participating provider of your choice. Upon presenting your card, you will pay the discounted price at the time of service. There is no paperwork and no limit to the number of times you can use the card. These discounts are available only at participating providers.

CAN I USE MY CO-OP CONNECTIONS CARD WITH MY CURRENT INSURANCE?

No, your card cannot be used in conjunction with insurance. However, use your card for products and services not covered by your insurance plans and receive a discounted rate.

CAN I FIND OUT THE DISCOUNTED PRICE OF MY PRESCRIPTIONS BEFORE GOING TO THE PHARMACY?

Yes, if you know the name, strength and quantity of the medication, you can find the discounted price of the medication by visiting www.rxpricequotes.com. You will receive the best price available to you through this program.

995 Mile 46 Road | P.O. Box 880 • Hooker, Oklahoma 73945 • 580.652.2418 • www.tcec.coop/ccs

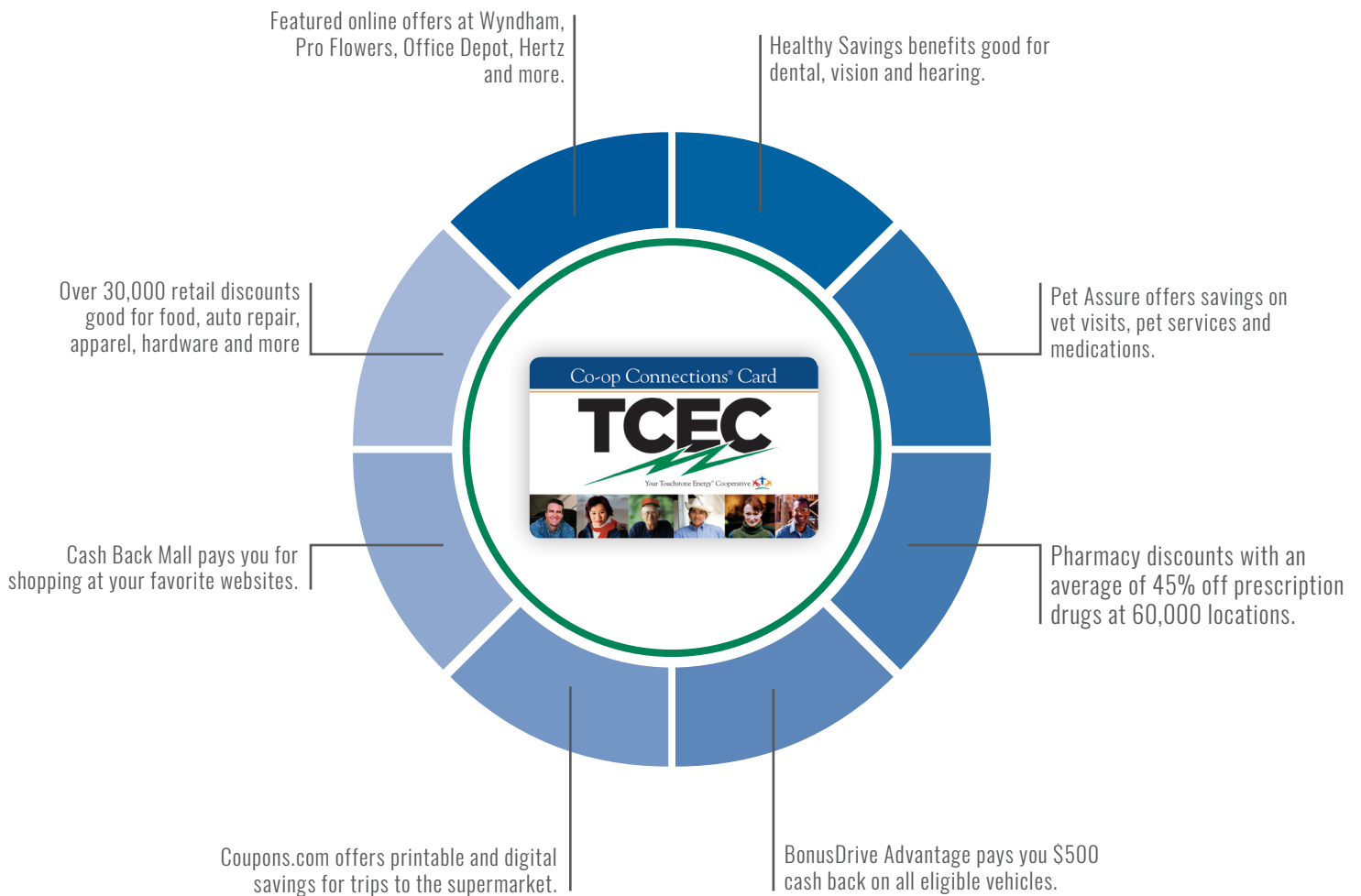
*Pharmacy discounts are not insurance, and are not intended as a substitute for insurance. The discount is only available at participating pharmacies.



Touchstone Energy[®]
Cooperatives

CO-OP CONNECTIONS

From prescriptions to pizza, the Co-op Connections Card helps you save on things you buy every day.



The One Card That Does It All.[®]

Find all the ways to save at **tcec.coop/ccc**.